

Portalampada G9

G9 Lamp-holders



ATTACCO/ CAP

G9

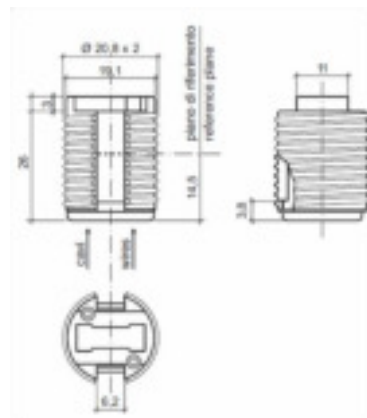
Art. 043

Per lampade ad incandescenza
ad alogeni a tensione di rete
*For main voltage halogen
incandescent lamps*

Nota/Notes

Il portalampada è idoneo per l'impiego in apparecchi di classe II se equipaggiato con cavi in doppio isolamento.

If equipped with double insulation cables this lamp-holder is suitable for Class II devices



DATI TECNICI

Tensione nominale:	250 V
Corrente nominale:	2 A
Temperatura di funzionamento:	T250°C
Categoria di tenuta all'impulso:	II
Tipo di connessione conduttori:	Morsetto ad innesto rapido per fili rigidi o flessibili . Con puntalino di puntalino terminale di d.max2mm se flessibili
Capacità connessione morsetti:	0,5 ÷ 0,75 mm ² diametro ext.max 2,2mm
Corpo in steatite: con filetto esterno d.20,8x2	
Contatti in acciaio inox	
Fissaggio corpo con clip	(accessori disponibili)
Conforme direttiva:	2006/95/CE

TECHNICAL DATA

Rated voltage:	250V
Rated current:	2 A
Nominal highest working temp.	T250°C
Impulse withstand category	II
Type of connection	Quick connection clamp for rigid and flexible wires. With lead assembly max diameter 2mm if flexible wire.
Terminals connection capacity:	0,5 ÷ 0,75 mm ² Ext.max diameter 2,2mm
Steatite body with external thread d.20,8x2	
Stainless steel contacts	
Fixing of the body with clips	(accessories available)
In conformity with directive	2006/95/CE

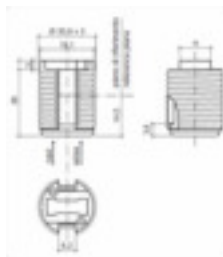
Portalampada *lamp-holder*

043

versioni disponibili / *available versions*

043

Portalampada G9. con filetto esterno d.20,8x2 senza cavi



043

Lampholder G9 with external thread d.20,8x2 without cables

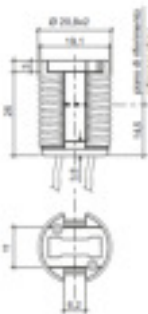
043/XX

/XX lunghezza dei cavi in cm. Da stabilire in fase di ordine

Come articolo 043 ma fornito con cavi già connessi.

Cavo di collegamento standard:

isolamento in FEP100 (T.max 180°C) lunghezza 15cm, spellatura 6mm. sez. 0,75mm².(AWG20) Altri tipi di cavo su richiesta



043/XX

/XX is the cable length in cm. To be define at the order

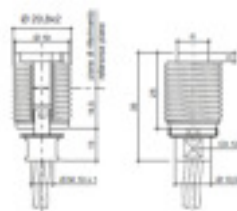
As art.043 but supplied with cables already connected.

Standard connection cable: FEP100 insulation (Max T180°C)

Lenght 15cm,with removed coated 6mm section 0,75mm² (AWG20). Other types of leads on demand..

043.A/XX

Portalampada assemblato con raccordo in metallo (art.042/16)
.Filetto femmina M10x1

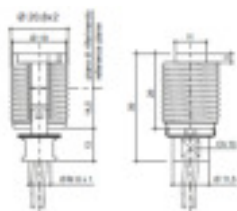


043.A/XX

Assembled lampholder with die-casted nichel plated connection (art.042/16). Female thread M10x1

043.A1/XX

Portalampada assemblato con raccordo in metallo (art.042/17).
Filetto femmina M8x1

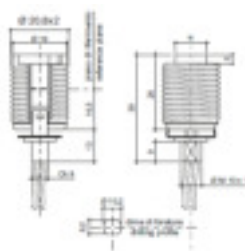


043.A1/XX

Assembled lampholder with die-casted nichel plated connection (art.042/17) Female thread M8x1

043.A2/XX

Portalampada assemblato con raccordo in metallo (art.042/18).
Filetto femmina M10x1



043.A2/XX

Assembled lampholder with die-casted nichel plated connection (art.042/18) Female thread M10x1

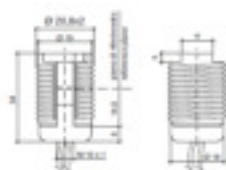
Portalampada *lamp-holder*

043

versioni disponibili / *available versions*

043.B/XX

Portalampada assemblato con
raccordo in LCP (art.042/13)
.Filetto femmina M10x1

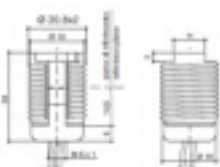


043.B/XX

*Assembled lampholder with
LCP connection (art.042/13)
Female_thread M10x1*

043.B1/XX

Portalampada assemblato con
raccordo in LCP (art.042/19).
Filetto femmina M8x1



043.B1/XX

*Assembled lampholder with
LCP connection (art.042/19)
Female thread M8x1*

043.L/XX

Portalampada assemblato con
squadretta a 90° in acciaio
nichelato (art.042/15).



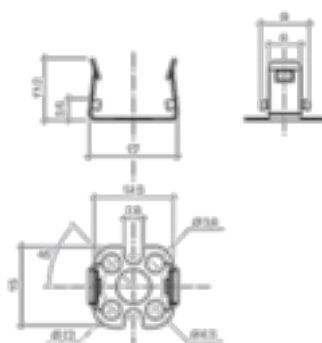
043.L/XX

*Assembled lampholder with
90° nickel.plated bracket
(art.042/15)*

042/08

Molla diritta di supporto
portalampada in acciaio
nichelato idonea per art.042-
043

- 1° fissaggio della molla alla
superficie di supporto
- 2° fissaggio del portalampada
a scatto sulla molla stessa



042/08

*Straight spring supporting the
lampholder made of
nickel.plated steel suitable for
lampholder art.042-043*

- 1° fixing of the spring on the
support surface
- 2° "click-on" fixing of the
lampholder on the spring

**/XX lunghezza dei cavi in cm. Da stabilire in fase di ordine
/XX is the cable length in cm. To be define at the order**

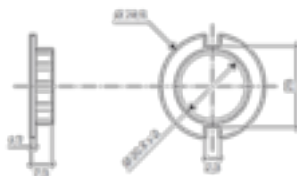
Portalampada lampholder

043

versioni disponibili / *available versions*

043/08

Ghiera in LCP con filetto
diametro 20,8x2

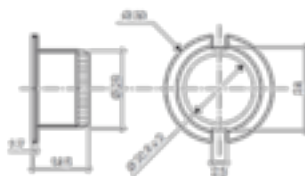


043/08

*LCP ring nut with thread
d.20,8x2..*

043/09

Ghiera in LCP con filetto
d.20,8x2



043/09

*LCP ring nut with thread
d.20,8x2*

043/10

Chiave a T in PP nero per ghiera
art. 043/08

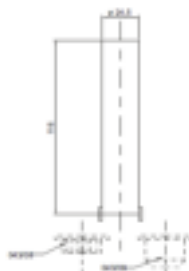


043/10

*T key made of PP black for ring
nut art.043/08*

043/11

Chiave a tubo in PP nero per
ghiere art.043/08-043/09



043/11

*Tubular spanner made of PP
black for ring nut art.043/08-
043/09*